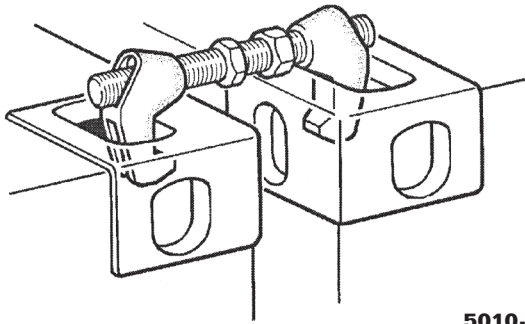
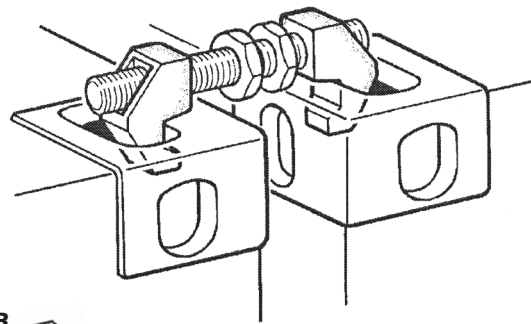




**5010-C7**



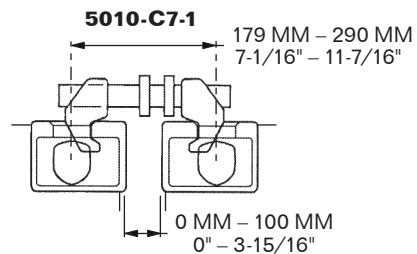
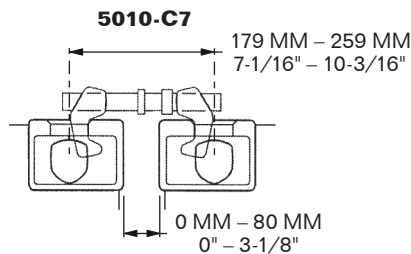
**5010-C7-1**



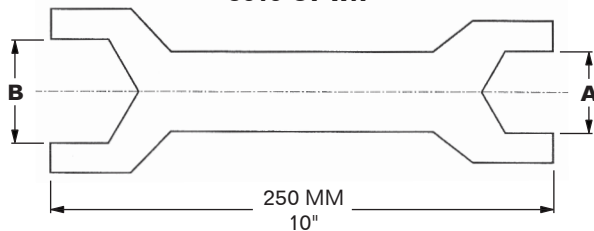
**5010-C7-WR**



MODEL	TENSION / COMPRESSION MIN. BREAKING LOAD (M. TON)	ADJUSTABLE RANGE (MM)	CONTAINER DISTANCE (MM)	SIZE		WEIGHT
				A	B	
<b>5010-C7</b>	7.0	179 – 259	0 – 80	–	–	3.5 Kg / 7.7 LBS
<b>5010-C7-1</b>	10.0	179 – 290	0 – 100	–	–	4.6 Kg / 10.1 LBS
<b>5010-6951</b>	15.0	104 – 310	0 – 200	–	–	7.40 Kg / 16.3 LBS
<b>5010-C7-WR</b>	–	–	–	M41	M52	0.9 Kg / 1.9 LBS



**WRENCH  
5010-C7-WR**

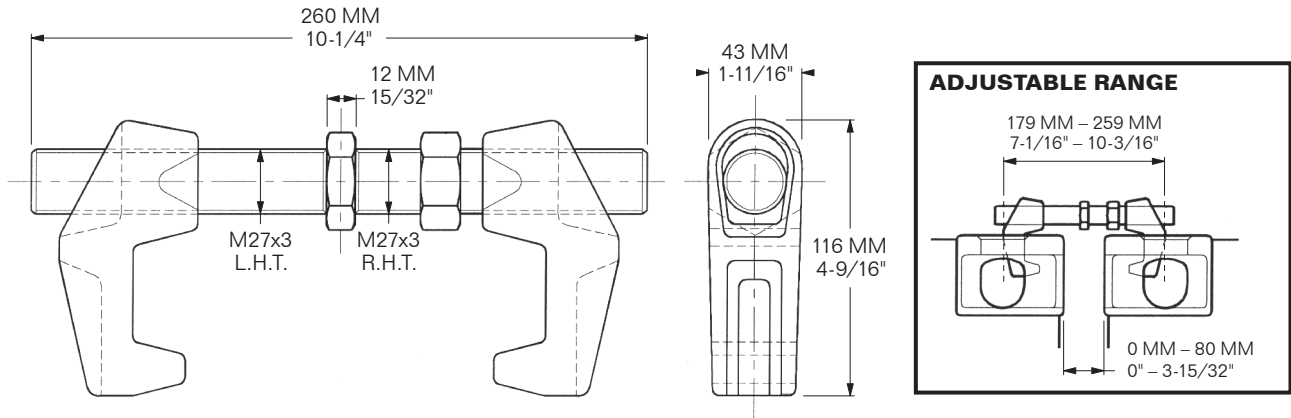


**MATERIAL: FORGED STEEL**  
**FINISH: HOT-DIP GALVANIZED (HDG)**  
**CLASS-APPROVED**



**MACGREGOR**  
ALLSET

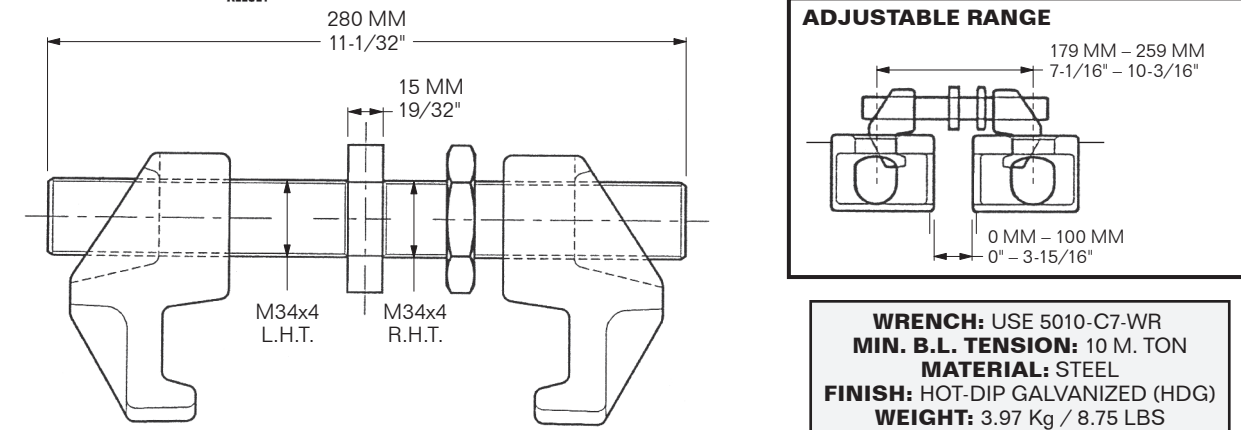
**MODEL 5010-C7**



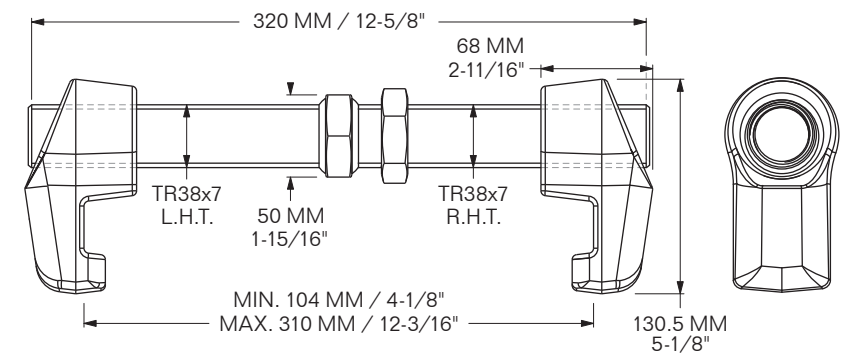
**WRENCH:** USE 5010-C7-WR **MIN. B.L. TENSION:** 7 M. TON  
**MATERIAL:** STEEL **FINISH:** HOT-DIP GALVANIZED (HDG) **WEIGHT:** 2.72 Kg / 6.75 LBS

**MACGREGOR**  
ALLSET

**MODEL 5010-C7-1**



**WRENCH:** USE 5010-C7-WR  
**MIN. B.L. TENSION:** 10 M. TON  
**MATERIAL:** STEEL  
**FINISH:** HOT-DIP GALVANIZED (HDG)  
**WEIGHT:** 3.97 Kg / 8.75 LBS

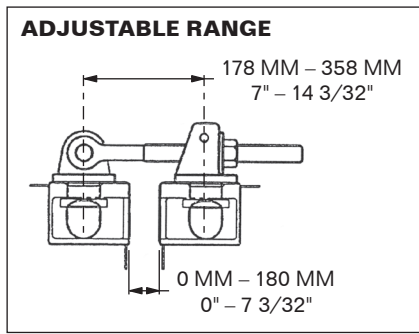
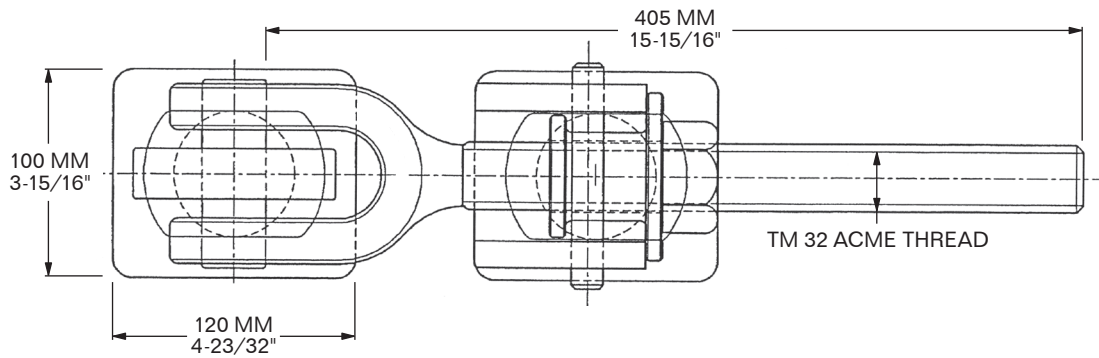
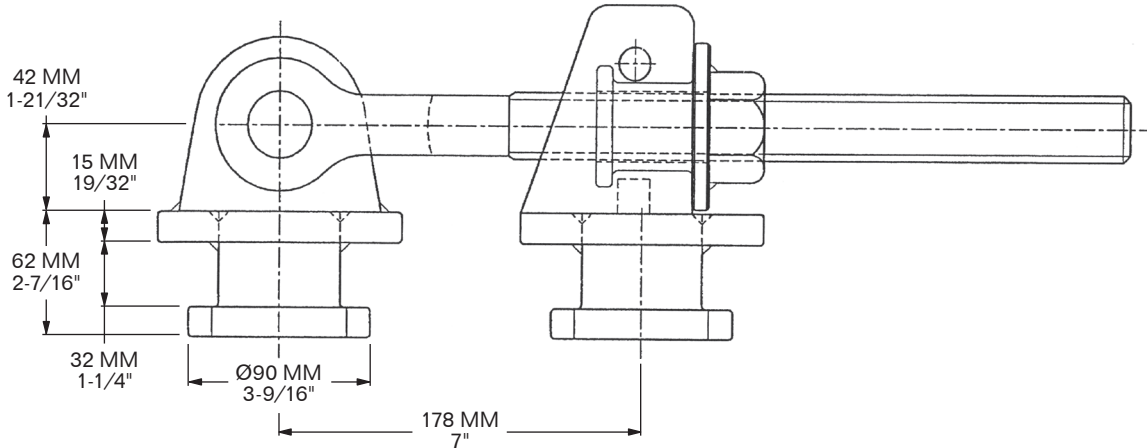


**MODEL 5010-6951**

**WRENCH:** USE 5010-C7-WR  
**MIN. B.L. TENSION:** 15 M. TON  
**MATERIAL:** STEEL  
**FINISH:** HOT-DIP GALVANIZED (HDG)  
**WEIGHT:** 7.37 Kg / 16.25 LBS



**MODEL 5010-C70A**



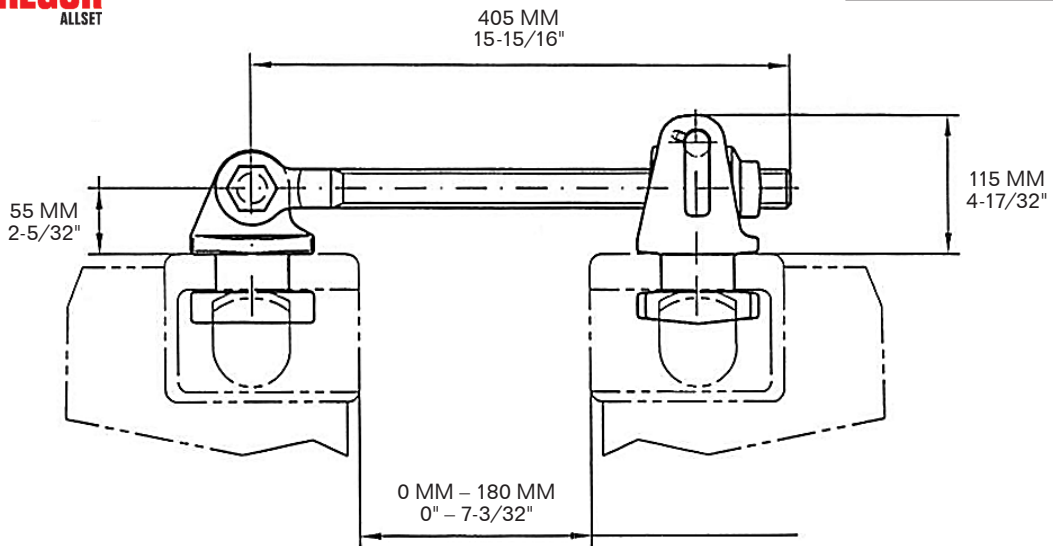
**MIN. B.L. TENSION: 12 M. TON**  
**MIN. B.L. COMPRESSION: 12 M. TON**

**MATERIAL: STEEL**  
**FINISH: HOT-DIP GALVANIZED (HDG)**  
**WEIGHT: 28.9 LBS / 13.10 Kg**



**MACGREGOR**  
ALLSET

**MODEL 5010-H-2**

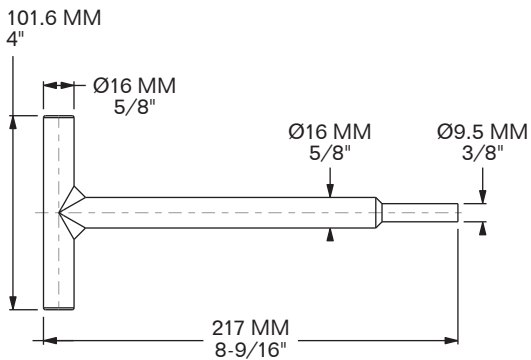


**MIN. B.L. TENSION: 40 M. TON**

**MATERIAL:** STRUCTURAL STEEL  
**FINISH:** HOT-DIP GALVANIZED (HDG)  
**WEIGHT:** 13.15 Kg / 29 LBS

**MODEL 5010-SEC-4**

**BRIDGE FITTING  
PIN TOOL**



**MATERIAL:** FORGED STEEL  
**FINISH:** HOT-DIP GALVANIZED (HDG)  
**WEIGHT:** 0.95 Kg / 2.09 LBS