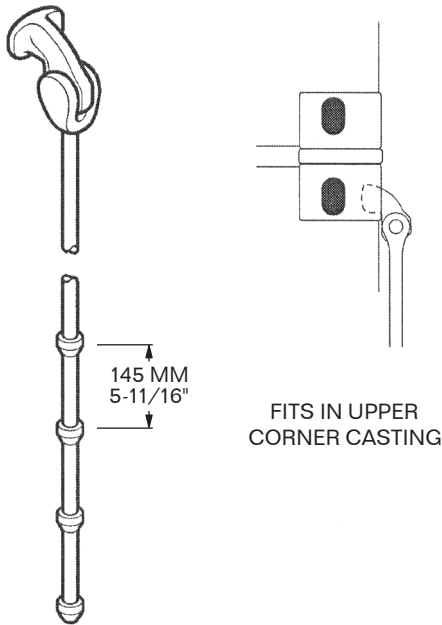
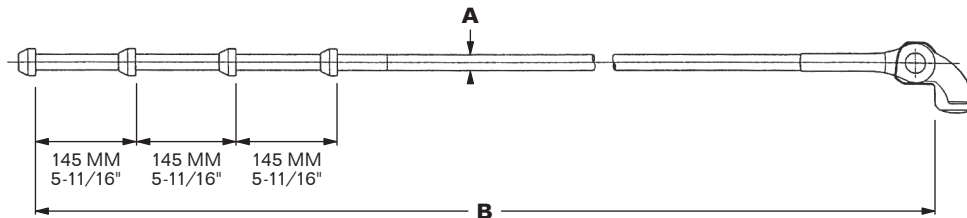
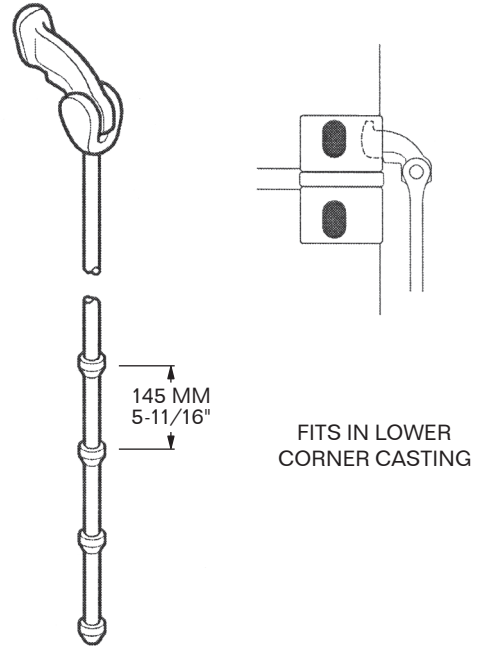




MODEL 5009-FLX-F
 HINGED HEAD



MODEL 5009-FLX-E
 HINGED, ELONGATED HEAD



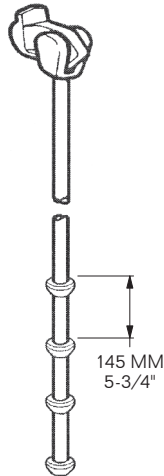
MODEL	MIN. B.L. (M. TON)	A	B	WEIGHT
5009-FLX-F-50-4400	50	Ø25 MM / O.D. 1"	4,400 MM / 173-1/4"	19.8 Kg / 43.7 LBS
5009-FLX-E-50-4725	50	Ø25 MM / O.D. 1"	4,725 MM / 186"	21.8 Kg / 48 LBS

SPECIAL ORDER ONLY

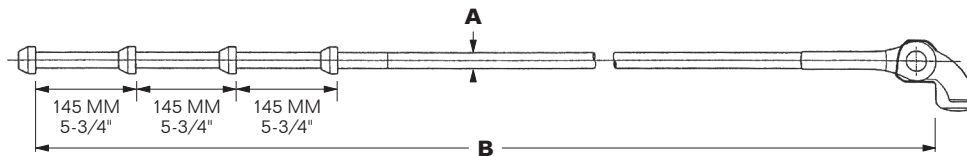
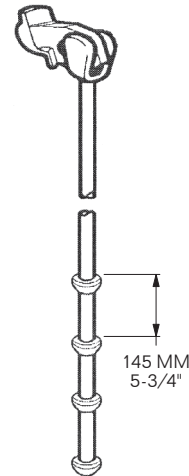
COUNTER PARTS: TURNBUCKLES TYPE FLX

MATERIAL: HIGH-TENSILE STEEL
FINISH: HOT-DIP GALVANIZED (HDG)
CLASS APPROVED

MODEL 5009-FLX-RD
HINGED HEAD



MODEL 5009-FLX-D
HINGED, ELONGATED HEAD



MODEL	MIN. B.S. (M. Ton)	A	B	WEIGHT
5009-FLX-RD-50-2250	50	Ø25 MM / O.D. 1"	2,250 MM / 88-1/2"	12 Kg / 26.4 LBS
5009-FLX-RD-50-4450	50	Ø25 MM / O.D. 1"	4,450 MM / 175-3/16"	19.4 Kg / 42.7 LBS
5009-FLX-RD-50-4550	50	Ø25 MM / O.D. 1"	4,550 MM / 179-1/8"	19.8 Kg / 43.7 LBS
5009-FLX-RD-50-4725	50	Ø25 MM / O.D. 1"	4,725 MM / 186"	20.6 Kg / 45.4 LBS
5009-FLX-RD-50-5100	50	Ø25 MM / O.D. 1"	5,100 MM / 200-13/16"	22.4 Kg / 49.4 LBS
5009-FLX-RD-50-5175	50	Ø25 MM / O.D. 1"	5,175 MM / 203-11/16"	22.7 Kg / 50 LBS

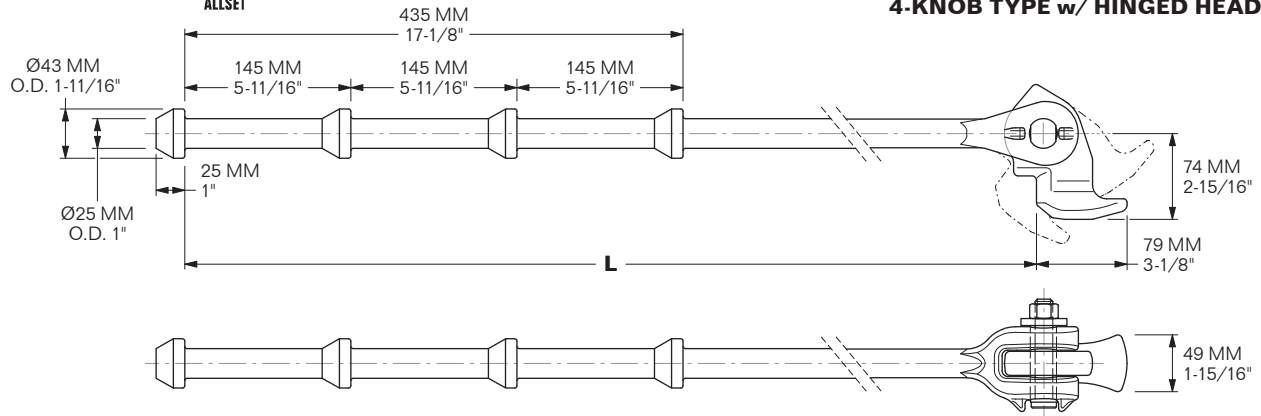
COUNTER PARTS: TURNBUCKLES TYPE FLX

MATERIAL: HIGH-TENSILE STEEL
FINISH: HOT-DIP GALVANIZED (HDG) **CLASS APPROVED**



MODEL 5008-LB-11

4-KNOB TYPE w/ HINGED HEAD



SHORT BARS*

SPECIAL ORDER ONLY

MODEL	MIN. B.L. (M. Ton)	L	WEIGHT	REFERENCE #
5008-LB-11-1680	50	1,680 MM / 66"	9.1 Kg / 20 LBS	1032221
5008-LB-11-2200	50	2,240 MM / 86.5"	10.8 Kg / 23.8 LBS	1005795
5008-LB-11-2240	50	2,240 MM / 88.2"	11.3 Kg / 25 LBS	1109311 *Red color code
5008-LB-11-2400	50	2,400 MM / 94.5"	11.8 Kg / 26 LBS	1003813
5008-LB-11-2430	50	2,430 MM / 95.7"	11.9 Kg / 26.3 LBS	1005812
5008-LB-11-2450	50	2,450 MM / 96.5"	12.2 Kg / 26.8 LBS	1005815
5008-LB-11-2475	50	2,475 MM / 97.5"	12.3 Kg / 27.1 LBS	1005775, 1005820
5008-LB-11-2500	50	2,500 MM / 98.4"	12.5 Kg / 27.5 LBS	1005825
5008-LB-11-2530	50	2,530 MM / 99.6"	12.7 Kg / 28 LBS	1003814
5008-LB-11-2550	50	2,550 MM / 100.4"	12.8 Kg / 28.3 LBS	1005830
5008-LB-11-2600	50	2,600 MM / 102.4"	13.2 Kg / 29 LBS	1005835
5008-LB-11-2650	50	2,650 MM / 104.3"	13.2 Kg / 29 LBS	1005838
5008-LB-11-2810	50	2,810 MM / 110.6"	15.7 Kg / 34.6 LBS	1005843

LONG BARS*

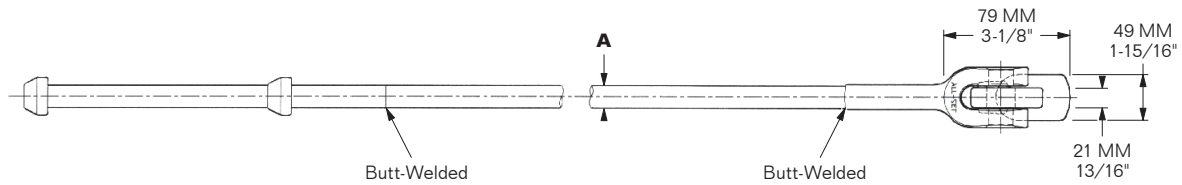
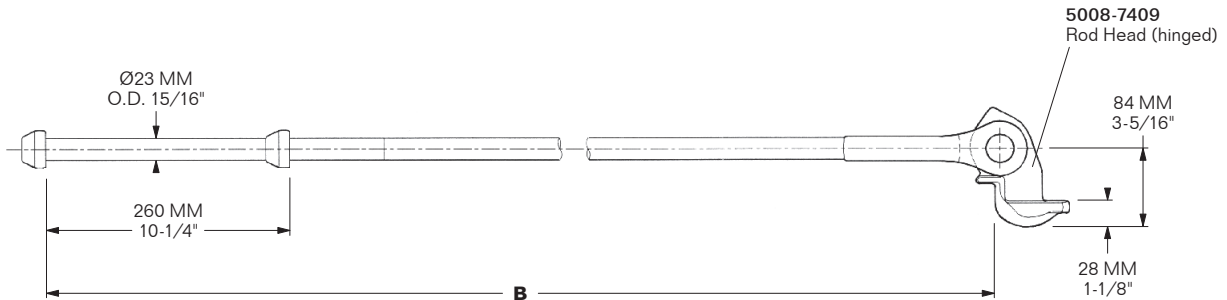
MODEL	MIN. B.L. (M. Ton)	L	WEIGHT	REFERENCE #
5008-LB-11-3700	50	3,700 MM / 145.7"	17.2 Kg / 38 LBS	1102136, 400003770
5008-LB-11-4300	50	4,300 MM / 169.3"	18 Kg / 39.6 LBS	1259613
5008-LB-11-4810	50	4,810 MM / 189.4"	21.8 Kg / 48.1 LBS	400000494
5008-LB-11-4850	50	4,850 MM / 191"	21.8 Kg / 48.1 LBS	1017528
5008-LB-11-4900	50	4,900 MM / 192.9"	22.2 Kg / 48.9 LBS	1005886, 400000496
5008-LB-11-4950	50	4,950 MM / 194.9"	22 Kg / 48.4 LBS	1004083
5008-LB-11-5000	50	5,000 MM / 197"	23.1 Kg / 51 LBS	1005895
5008-LB-11-5180	50	5,180 MM / 203.9"	24.5 Kg / 54 LBS	1005909
5008-LB-11-5200	50	5,200 MM / 204.7"	24.3 Kg / 53.6 LBS	1005910
5008-LB-11-5400	50	5,400 MM / 214.6"	23.7 Kg / 52.1 LBS	1093603
5008-LB-11-5500	50	5,500 MM / 216.5"	24.9 Kg / 55 LBS	1221548

*Additional lengths are available upon request via special order.

MATERIAL: HIGH-TENSILE STEEL FINISH: HOT-DIP GALVANIZED (HDG) CLASS APPROVED



MODEL 5009-FLX-RD-42



MODEL	KNOBS	MIN. B.L. (M. Ton)	A	B	WEIGHT
5009-FLX-RD-42-2250	4	42	Ø22 MM / O.D. 7/8"	2,250 MM / 88-9/16"	11.3 Kg / 25 LBS
5009-FLX-RD-42-2500	4	42	Ø22 MM / O.D. 7/8"	2,500 MM / 98-7/16"	12.7 Kg / 28 LBS
5009-FLX-RD-42-2510	2	42	Ø22 MM / O.D. 7/8"	2,510 MM / 98-13/16"	10.8 Kg / 23.8 LBS
5009-FLX-RD-42-4500	4	42	Ø22 MM / O.D. 7/8"	4,500 MM / 177-3/16"	15.9 Kg / 35 LBS

MATERIAL: STEEL
FINISH: HOT-DIP GALVANIZED (HDG)



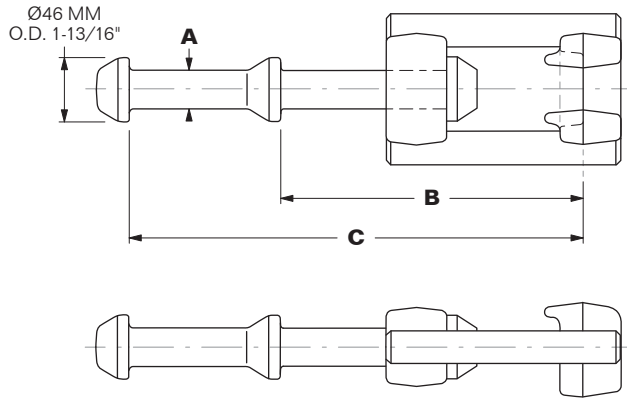
SPECIAL ORDER ONLY

MODEL 5009-FLX2-EP-50-300-1130859

SPECIAL ORDER ONLY

MODEL 5009-FLX2-EP-50-310-1130863

2 KNOB



MIN. B.L. TENSION: 50 M. TON

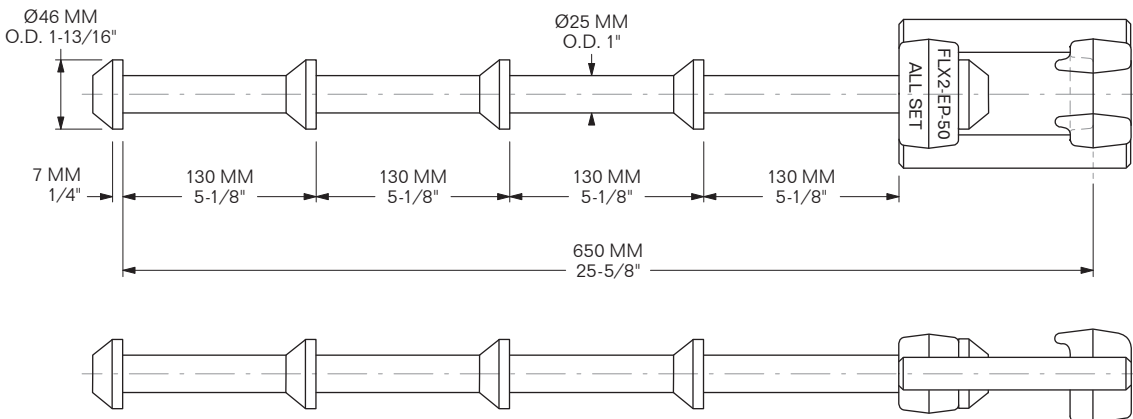
MATERIAL: STEEL
FINISH: HOT-DIP GALVANIZED (HDG)

MODEL	A	B	C	WEIGHT
5009-FLX2-EP-50-300-1130859	Ø25 MM / O.D. 1"	200 MM / 7-7/8"	300 MM / 11-7/8"	3.6 Kg / 8 LBS
5009-FLX2-EP-50-310-1130863	Ø25 MM / O.D. 1"	200 MM / 7-7/8"	310 MM / 12-3/16"	3.7 Kg / 8.2 LBS



MODEL 5009-FLX2-EP-50-650-1130860

4 KNOB

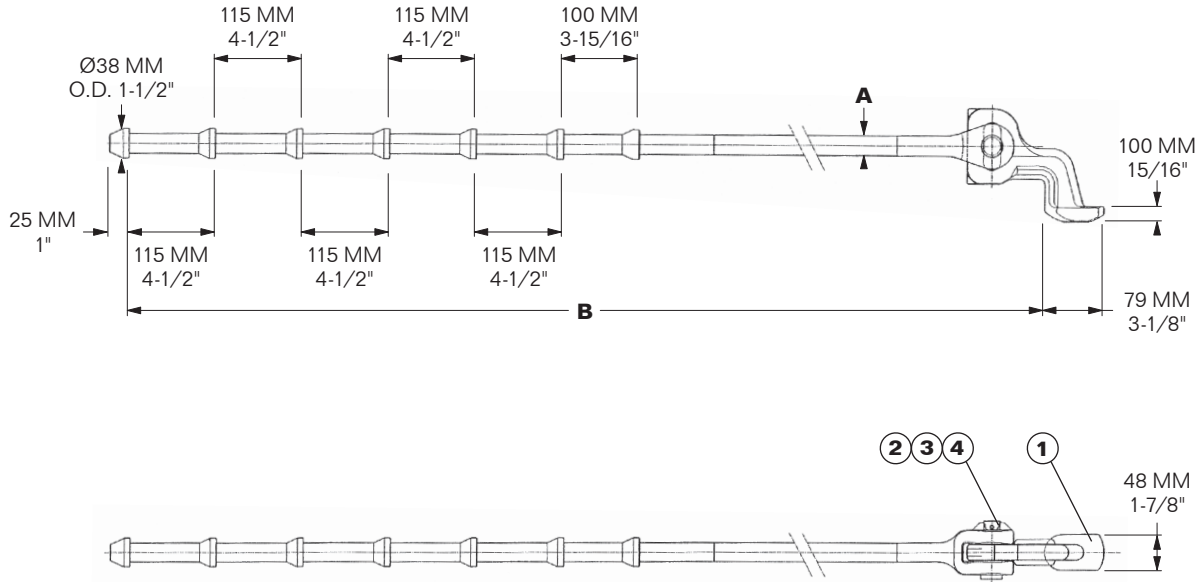


MIN. B.L. TENSION: 50 M. TON

MATERIAL: STEEL
FINISH: HOT-DIP GALVANIZED (HDG)
WEIGHT: 7.1 Kg / 15.7 LBS



7-KNOB TYPE w/ HINGED HEAD



MODEL	APM #	MIN. B.L. (M. Ton)	A	B	WEIGHT
5008-LB-2225-K7	312574	48	Ø25 MM / O.D. 1"	2,225 MM / 87-5/8"	12.2 Kg / 28.9 LBS
5008-LB-2625-K7	312573	48	Ø25 MM / O.D. 1"	2,625 MM / 103-5/16"	13.8 Kg / 30.4 LBS

SPECIAL ORDER ONLY

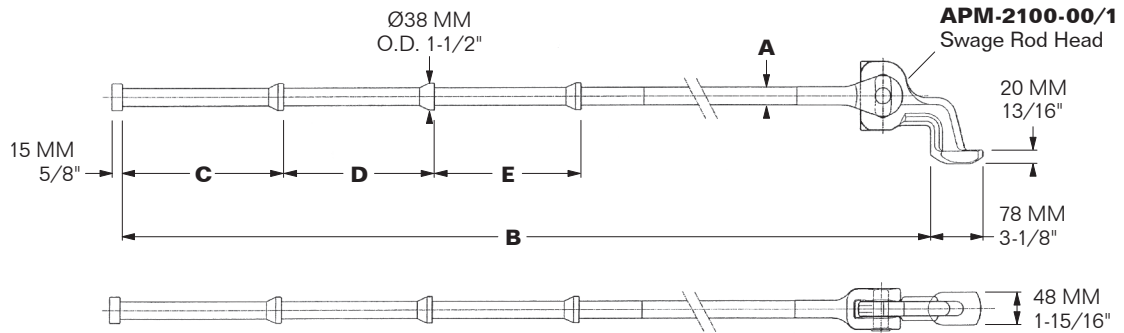
ITEM	QTY	MODEL	APM #	DESCRIPTION	WEIGHT
1	1	5008-APM-2100-00/1	308142	Head for Lashing Rod, HDG	2.13 Kg / 4.7 LBS
2	1	5008-APM-2100-00/5	308144	Pin for Head & Dbl. Hook Jaw	0.25 Kg / 0.55 LBS
3	1	5008-APM-2100-00/6	308145/1	Spring Pin*, 6 x 28 MM, SS	0.07 Kg / 0.15 LBS
4	1	5008-APM-2100-00/7	308145/2	Spring Pin*, 3.5 x 28 MM, SS	0.02 Kg / 0.05 LBS
ALSO AVAILABLE: 5008-APM-2100-00/6-7			308145	Spring Pin* Kit (3.5 & 6 MM)	0.09 Kg / 0.2 LBS

***NOTE:** The 3.5 MM Spring Pin fits inside the 6 MM Spring Pin.

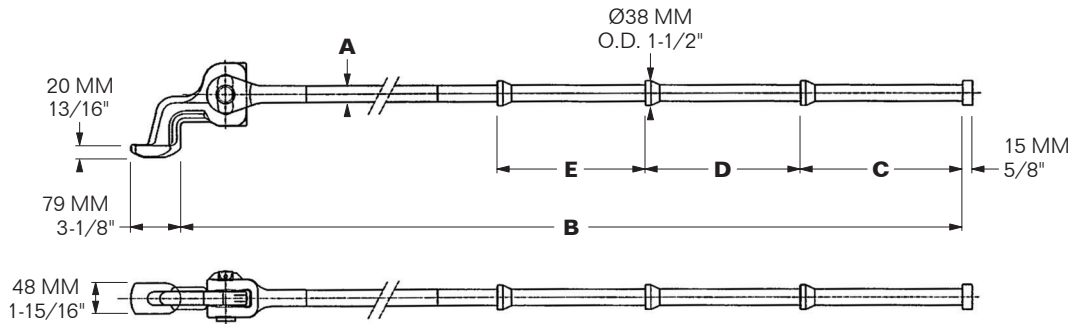
MATERIAL: STEEL
FINISH: HOT-DIP GALVANIZED (HDG)



4-KNOB TYPE w/ HINGED HEAD



MODEL	APM #	MIN. B.L. (M. Ton)	A	B	C	D	E	WEIGHT
5009-LB-2205-K4S SPECIAL ORDER ONLY	357398	48	Ø25 MM O.D. 1"	2,205 MM 86-13/16"	235 MM 9-1/4"	220 MM 8-11/16"	215 MM 8-7/16"	11.5 Kg 25.4 LBS
5009-LB-2570-K4S SPECIAL ORDER ONLY	357389/355303	48	Ø25 MM O.D. 1"	2,570 MM 101-3/16"	235 MM 9-1/4"	220 MM 8-11/16"	215 MM 8-7/16"	13.3 Kg 29.3 LBS
5009-LB-2890-K4S	357379/341326	48	Ø25 MM O.D. 1"	2,890 MM 113-13/16"	240 MM 9-7/16"	230 MM 9-1/16"	215 MM 8-7/16"	14.5 Kg 32 LBS
5009-LB-3072-K4S SPECIAL ORDER ONLY	357384/342418	48	Ø25 MM O.D. 1"	3,072 MM 120-15/16"	250 MM 9-13/16"	240 MM 9-7/16"	230 MM 9-1/16"	15.1 Kg 33.3 LBS
5009-LB-3200-K4S SPECIAL ORDER ONLY		48	Ø25 MM O.D. 1"	3,200 MM 126"	210 MM 8-1/4"	210 MM 8-1/4"	200 MM 7-7/8"	15.7 Kg 34.6 LBS

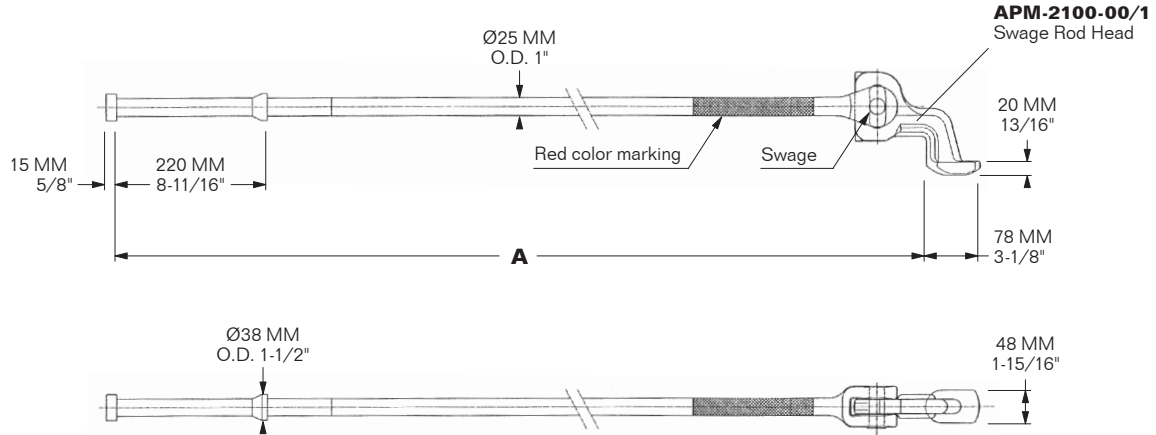


MODEL	APM #	MIN. B.L. (M. Ton)	A	B	C	D	E	WEIGHT
5009-LB-3072-K4S SPECIAL ORDER ONLY	342418, 357384	48	Ø25 MM O.D. 1"	3,072 MM 120-15/16"	250 MM 9-13/16"	240 MM 9-7/16"	230 MM 9-1/16"	15.1 Kg 33.3 LBS
5009-LB-3340-K4 SPECIAL ORDER ONLY	341327	48	Ø25 MM O.D. 1"	3,340 MM 131-1/2"	250 MM 9-13/16"	240 MM 9-7/16"	230 MM 9-1/16"	16.3 Kg 35.9 LBS

MATERIAL: STEEL
FINISH: HOT-DIP GALVANIZED (HDG)



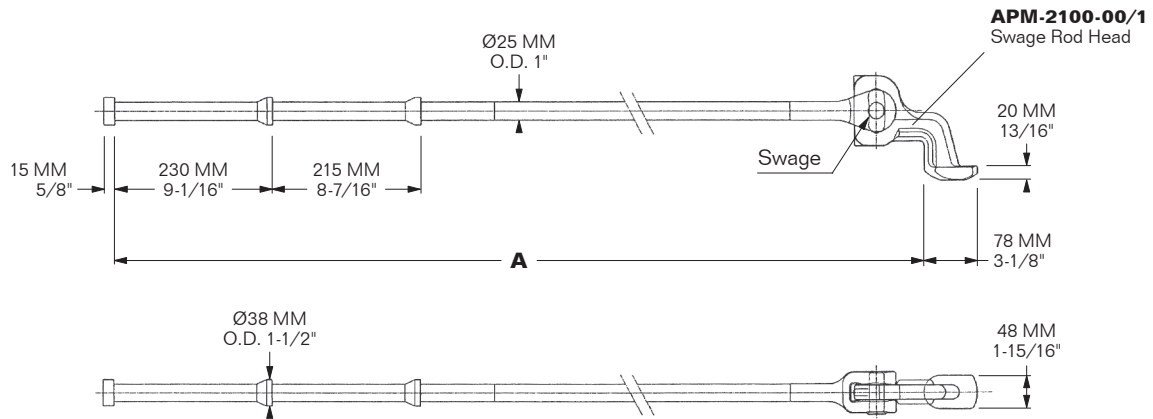
2-KNOB TYPE w/ HINGED HEAD



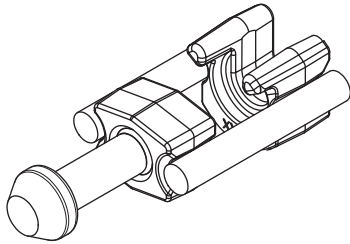
MODEL	APM #	MIN. B.L. (M. Ton)	A	WEIGHT
5009-LB-2085-K2S SPECIAL ORDER ONLY	357388/355284	48	2,085 MM / 82-1/8"	11 Kg / 24.3 LBS



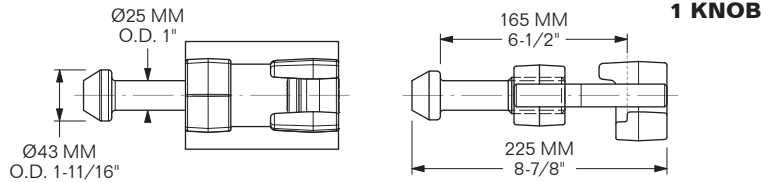
3-KNOB TYPE w/ HINGED HEAD



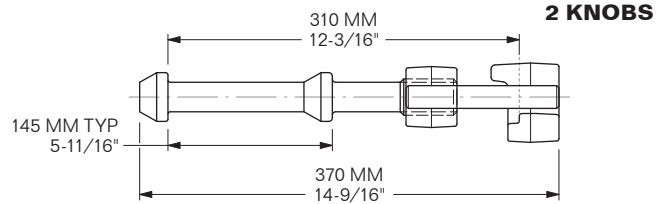
MODEL	APM #	MIN. B.L. (M. Ton)	A	WEIGHT
5009-LB-2520-K3S	360779/342417	48	2,520 MM / 99-1/4"	13.1 Kg / 28.9 LBS
5009-LB-2650-K3S SPECIAL ORDER ONLY	1938583	48	2,650 MM / 104-3/8"	13.7 Kg / 30.2 LBS



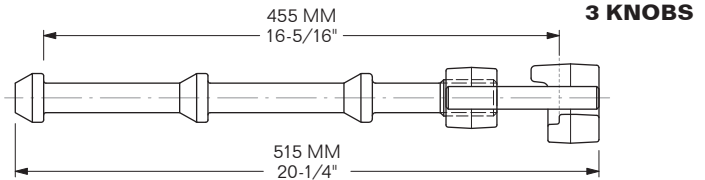
MODEL 5009-LB-14-K1-1142925



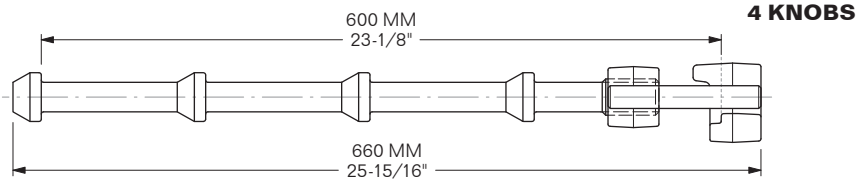
SPECIAL ORDER ONLY MODEL 5009-LB-14-K2



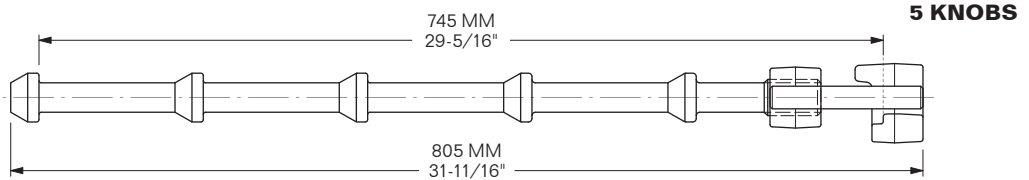
SPECIAL ORDER ONLY MODEL 5009-LB-14-K3



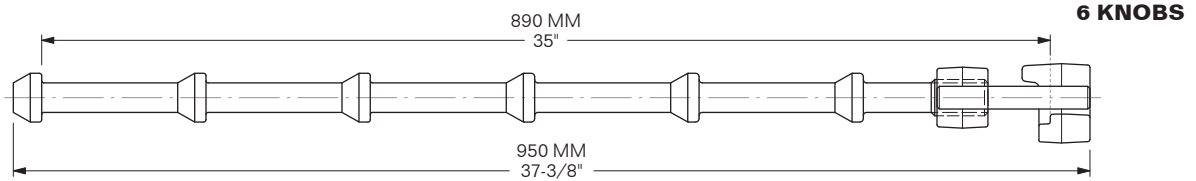
SPECIAL ORDER ONLY MODEL 5009-LB-14-K4



SPECIAL ORDER ONLY MODEL 5009-LB-14-K5



SPECIAL ORDER ONLY MODEL 5009-LB-14-K6



MODEL	WEIGHT	SUB FOR:
5009-LB-14-K1	3.1 Kg / 6.8 LBS	1142925
5009-LB-14-K2	3.8 Kg / 8.4 LBS	1142926
5009-LB-14-K3	4.5 Kg / 9.9 LBS	1142927
5009-LB-14-K4	5.3 Kg / 11.7 LBS	1142928
5009-LB-14-K5	6.3 Kg / 13.9 LBS	1218445
5009-LB-14-K6	6.5 Kg / 14.3 LBS	1218446

MIN. B.L. TENSION: 50 M. TON

MATERIAL: HIGH-TENSILE STEEL FINISH: HOT-DIP GALVANIZED (HDG)