



D-RINGS w/ STRAPS

ISO FLATRACK, FLATBED & AUTO TRAILERS

FINISH:
 SC – SELF-COLOR
 HDG – HOT-DIP GALVANIZED
 PR – PRIMER

STANDARD-TYPE D-RINGS
NOTE: D-Ring strength for tie-down purposes only. **NOT FOR LIFTING.**

MODEL	DESC.	FINISH	WEIGHT	SWL	MBS	D-RING DIMENSIONS			STRAP DIMENSIONS			
						A	B	C	D	E	F	G
2902-6367-1-SC	D-RING	SC	0.62 LBS 0.28 Kg	3,333 LBS 1,512 Kg	10,000 LBS 4,536 Kg	2-7/16"	2-7/16"	3/8"	1-1/2" 38 MM	3/4" 19 MM	1-1/2" 38 MM	1/4" 6 MM
2902-6367-2-SC	STRAP	SC	0.2 LBS 0.09 Kg			62.4 MM	62.6 MM	10 MM				
2902-7576-1-SC	D-RING	SC	1.3 LBS 0.59 Kg	6,333 LBS 2,873 Kg	19,000 LBS 8,618 Kg	4-1/4"	4-1/4"	5/8"	2-1/2" 63.5 MM	1-3/16" 30 MM	1-3/4" 44.5 MM	3/8" 9 MM
2902-7576-2-SC	STRAP	SC	0.75 LBS 0.34 Kg			108.2 MM	108.2 MM	16 MM				
2902-6490-1-PR SPECIAL ORDER ONLY	D-RING	PR	1.64 LBS 0.74 Kg	9,000 LBS 4,082 Kg	27,000 LBS 12,247 Kg	4-1/2"	4-1/2"	3/4"	2-11/16" 68 MM	1-3/8" 34 MM	1-7/8" 47 MM	3/8" 9 MM
2902-6490-2-PR	STRAP	PR	0.94 LBS 0.43 Kg			114.2 MM	114.2 MM	19 MM				
2902-7399-1-HDG	D-RING	HDG	1.97 LBS 0.89 Kg	14,000 LBS 6,350 Kg	42,000 LBS 19,050 Kg	5" 127 MM	5" 127 MM	3/4" 19 MM	3-1/8" 80 MM	1-3/8" 34 MM	1-7/8" 47 MM	3/8" 9 MM
2902-7399-1-SC	D-RING	SC	1.97 LBS 0.89 Kg									
2902-7399-2-SC	STRAP	SC	0.89 LBS 0.4 Kg									
2902-7593-1-SC	D-RING	SC	3.06 LBS 1.39 Kg	15,667 LBS 7,106 Kg	47,000 LBS 21,319 Kg	5" 127 MM	5" 127 MM	1" 25.4 MM	2-9/16" 65 MM	1-11/16" 43 MM	2-1/4" 56 MM	7/16" 11 MM
2902-1578-2-SC	STRAP	SC	1.2 LBS 0.54 Kg									
2902-1578-1-HDG	D-RING	HDG	3.25 LBS 1.47 Kg	15,667 LBS 7,106 Kg	47,000 LBS 21,319 Kg	5" 127 MM	6" 152.4 MM	1" 25.4 MM	2-9/16" 65 MM	1-11/16" 43 MM	2-1/4" 56 MM	7/16" 11 MM
2902-1578-1-SC	D-RING	SC	3.7 LBS 1.68 Kg									
2902-1578-2-HDG	STRAP	HDG	1.2 LBS 0.54 Kg									
2902-1578-2-SC	STRAP	SC	1.2 LBS 0.54 Kg									

FINISH:
 SC – SELF-COLOR
 ZP – ZINC-PLATED

STANDARD-TYPE D-RINGS
NOTE: D-Ring strength for tie-down purposes only. **NOT FOR LIFTING.**
 *D-Ring shown w/ 2902-7669 Bolt-On Strap

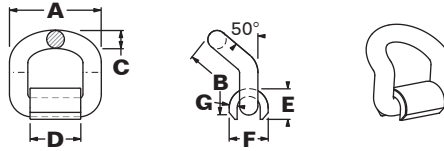
MODEL	DESC.	FINISH	WEIGHT	SWL	MBS	D-RING DIMENSIONS			STRAP DIMENSIONS			
						A	B	C	D	E	F	G
2902-7668-1-ZP	D-RING	ZP	0.64 LBS 0.29 Kg	3,333 LBS 1,512 Kg	10,000 LBS 4,536 Kg	3-1/4" 82.5 MM	3-1/2" 88.9 MM	1/2" 12.7 MM	1-5/8" 41.2 MM	7/8" 22.7 MM	1-1/16" 27 MM	1/4" 5.7 MM
2902-7668-2-SC	STRAP	SC	0.25 LBS 0.11 Kg									
2902-7669	STRAP	ZP	0.4 LBS 0.18 Kg	4,100 LBS 1,859 Kg	12,300 LBS 5,579 Kg	3-1/4" 82.5 MM	3-1/2" 88.9 MM	1/2" 12.7 MM	3/4" 45 MM	7/8" 22.7 MM	1-1/16" 27 MM	5/16" 7 MM
2902-8477-1-SC Military applications	D-RING	SC	0.55 LBS 0.25 Kg									
2902-8477-1-ZP Military applications	D-RING	ZP	0.55 LBS 0.25 Kg									
2902-8477-2-SC Military applications	STRAP	SC	0.35 LBS 0.16 Kg									



D-RINGS w/ STRAPS

ISO FLATRACK, FLATBED & AUTO TRAILERS

FINISH:
 SC – SELF-COLOR
 HDG – HOT-DIP GALVANIZED
 PR – PRIMER

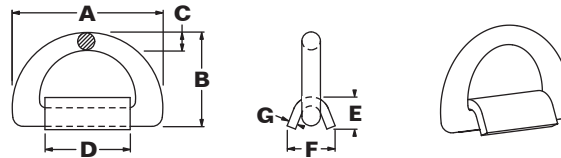


BENT-TYPE D-RINGS

NOTE: D-Ring strength for tie-down purposes only. **NOT FOR LIFTING.**

MODEL	DESC.	FINISH	WEIGHT	SWL	MBS	D-RING DIMENSIONS			STRAP DIMENSIONS			
						A	B	C	D	E	F	G
2902-7614-1-HDG	D-RING	HDG	3.54 LBS 1.61 Kg	15,000 LBS 6,803 Kg	45,000 LBS 20,411 Kg	5"	5-1/2"	1"	2-9/16"	1-11/16"	2-7/32"	7/16"
2902-1578-2-HDG	STRAP	HDG	1.20 LBS 0.54 Kg			127 MM	140 MM	25.4 MM	65 MM	43 MM	56 MM	11 MM
2902-1756-1-HDG	D-RING	HDG	3.64 LBS 1.65 Kg	15,667 LBS 7,106 Kg	47,000 LBS 21,318 Kg	5"	6"	1"	2-9/16"	1-11/16"	2-7/32"	7/16"
2902-1756-1-SC	D-RING	SC	3.69 LBS 1.67 Kg									
2902-1578-2-HDG	STRAP	HDG	1.20 LBS 0.54 Kg									
2902-1578-2-SC	STRAP	SC	1.20 LBS 0.54 Kg									

FINISH:
 SC – SELF-COLOR
 HDG – HOT-DIP GALVANIZED
 PR – PRIMER



MARINE-TYPE D-RINGS

NOTE: D-Ring strength for tie-down purposes only. **NOT FOR LIFTING.**

MODEL	DESC.	FINISH	WEIGHT	SWL	MBS	D-RING DIMENSIONS			STRAP DIMENSIONS			
						A	B	C	D	E	F	G
2902-1160-1-SC	D-RING	SC	0.75 LBS 0.34 Kg	907 Kg 2,000 LBS	2,722 Kg 6,000 LBS	4-3/4" 120 MM	2-15/16" 74 MM	9/16" 14 MM	3-7/16" 87 MM	1" 25 MM	1-1/4" 32.5 MM	1/4" 7.1 MM
2902-1160-2-HDG	STRAP	HDG	0.50 LBS 0.23 Kg									
2902-1160-2-SC	STRAP	SC	0.50 LBS 0.23 Kg									
5012-1854-1-HDG	D-RING	HDG	5.70 LBS 2.59 Kg	20.5 M.TON 45,195 LBS	41 M.TON 90,390 LBS	8-7/8" 225 MM	5-7/16" 138 MM	1" 25.4 MM	4-15/16" 126 MM	1-13/16" 45.8 MM	2-11/16" 68.7 MM	1/2" 12 MM
5012-1854-2-HDG	STRAP	HDG	2.92 LBS 1.32 Kg									
3701-2526-1-PR	D-RING	PR	5.70 LBS 2.58 Kg	25 M.TON 55,115 LBS	50 M.TON 110,230 LBS	8-3/4" 222 MM	5-11/16" 143.8 MM	1" 25.4 MM	4-1/2" 108 MM	2" 50.8 MM	2-3/8" 60.3 MM	9/16" 15 MM
3701-2526-1-SC	D-RING	SC	5.67 LBS 2.57 Kg									
3701-2526-2-PR	STRAP	PR	2.77 LBS 1.26 Kg									
3701-2526-2-SC	STRAP	SC	2.77 LBS 1.26 Kg									
5012-7092-1-PR	D-RING	PR	7.75 LBS 3.52 Kg	25 M.TON 55,115 LBS	50 M.TON 110,230 LBS	9-7/16" 240 MM	5-15/16" 151 MM	1-1/4" 32 MM	5-1/2" 140 MM	2" 50 MM	2-7/8" 73 MM	9/16" 14 MM
5012-7092-1-HDG	D-RING	HDG	7.93 LBS 3.60 Kg									
5012-7092-2-PR	STRAP	PR	3.32 LBS 1.50 Kg									
5012-7092-2-HDG	STRAP	HDG	3.05 LBS 1.38 Kg									





D-RINGS, CARGO CONTROL FLOOR CHAIN TIE-DOWNS ISO FLATRACK, FLATBED & AUTO TRAILERS

9/16"
Ø14 MM

2-15/16"
74 MM

3-7/16"
87 MM

4-11/16"
119 MM

D-RING MODEL 3701-1177

STRAP MODEL 2902-1160-2

15/16"
24.5 MM

1-1/4"
32 MM

1/4"
6 MM

SWL: 5,000 LBS / 2,268 Kg
MBS: 15,000 LBS / 6,804 Kg

3701-1177 D-RING
MATERIAL: FORGED STEEL FINISH: SELF-COLOR
WEIGHT: 0.77 LBS / 0.35 Kg

2902-1160-2-SC or -HDG STRAP
MATERIAL: FORGED STEEL FINISH: SELF-COLOR or HDG
WEIGHT: 0.54 LBS / 0.24 Kg

1"
25.4 MM

5-5/8"
143 MM

3-9/16"
90.5 MM

2-1/8"
54 MM

6-27/32"
173.6 MM

MODEL 3701-7577-KIT
CHAIN TIE-DOWN ANCHOR

2"
51 MM

2-9/32"
58 MM

1/2"
13.5 MM

45°

90°

FUNCTIONAL AT MIN. 45° TO EITHER SIDE OF VERTICAL CENTER.

FUNCTIONAL AT MIN. 90° FROM VERTICAL CENTER TOWARD CARGO AREA.

SWL: 5,000 LBS / 2,268 Kg
MBS: 15,000 LBS / 6,804 Kg

WEIGHT: 2.04 LBS / 0.93 Kg

4"
Ø2"

1-3/8"

1"

1-1/2"

3-1/4"

Ø7/16" x 4 HOLES

3"

MODEL 2902-2778
CHAIN TIE-DOWN ANCHOR

3-3/4"

2-13/32"

FINISH: HDG
WEIGHT: 5.87 LBS / 2.66 Kg

WORKING LOAD LIMIT (WLL): 5,400 LBS / 2,449 Kg

STAINLESS STEEL COVER PLATE, ALLOY STEEL CLEVIS PINS (2 PCS), STAINLESS STEEL COTTER PINS (2 PCS), 3/8" (10 MM) ALLOY STEEL GR 70 CHAIN