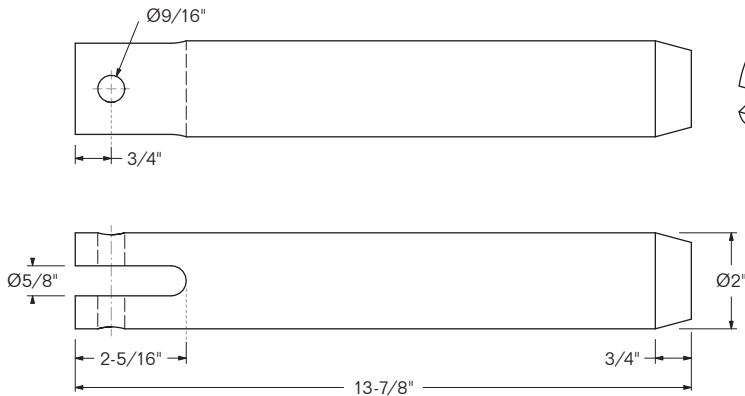


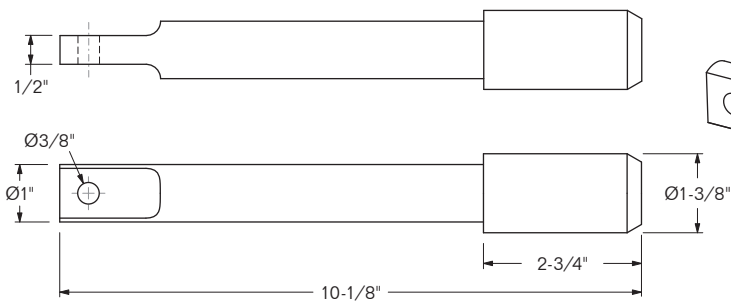
MODEL 1501-2448



FITS: CHASSIS KING
MATERIAL: ALLOY STEEL
FINISH: ANTI-GALL/LIGHTLY OILED
WEIGHT: 11.2 LBS / 5.08 Kg

MODEL 1501-2632

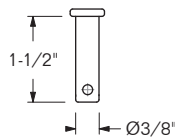
MODEL 1501-2632-KIT



SLIDER PIN

MODEL 1501-2632

SUB FOR: PENZ 35-01 **FITS:** STRICK
MATERIAL: ALLOY STEEL **FINISH:** PRIMER
WEIGHT: 2.6 LBS / 1.18 Kg



CLEVIS PIN

MODEL 1501-4611

SUB FOR: PENZ 17-16
MATERIAL: STD CARBON STEEL **FINISH:** ZINC-PLATED
WEIGHT: 0.054 LBS / 0.025 Kg

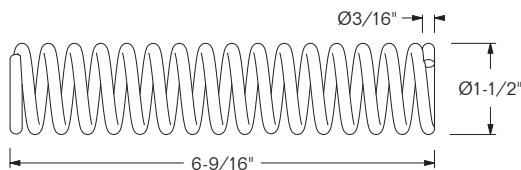


COTTER PIN

1/8" x 3/4"

MODEL 1501-4591-SS

SUB FOR: PENZ 17-17
MATERIAL: STAINLESS STEEL **FINISH:** SELF-COLOR
WEIGHT: 0.05 LBS / 0.03 Kg



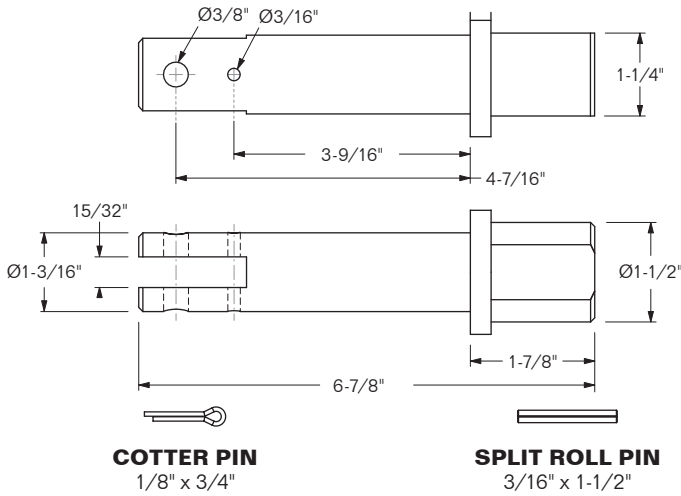
SPRING

MODEL 1501-4612

SUB FOR: PENZ 50-23 **FITS:** STRICK
MATERIAL: STD CARBON STEEL **FINISH:** PRIMER
WEIGHT: 0.051 LBS / 0.023 Kg

TO ORDER THE **COMPLETE ASSEMBLY**,
USE MODEL 1501-2632-KIT, WHICH INCLUDES
 1501-2632 **SLIDER PIN**, 1501-4611 **CLEVIS PIN**,
 1501-4612 **SPRING** & 1501-4591-SS **COTTER PIN**.

SUB 1501-2632-KIT FOR: PENZ 35-01-KIT
KIT WEIGHT: 3.17 LBS / 1.44 Kg



COTTER PIN
1/8" x 3/4"

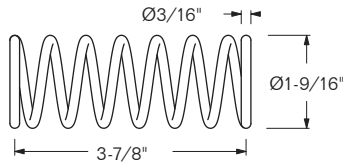
SPLIT ROLL PIN
3/16" x 1-1/2"

MODEL 1501-4591-SS

SUB FOR: PENZ 17-17
MATERIAL: STAINLESS STEEL
FINISH: SELF-COLOR
WEIGHT: 0.05 LBS / 0.03 Kg

MODEL 1501-4599-SS

SUB FOR: PENZ 17-18
MATERIAL: STAINLESS STEEL
FINISH: SELF-COLOR
WEIGHT: 0.01 LBS / 0.004 Kg

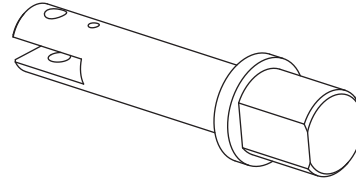


SPRING

MODEL 1501-4613

SUB FOR: PENZ 50-24
MATERIAL: STD CARBON STEEL **FINISH:** SELF-COLOR
WEIGHT: 0.25 LBS / 0.11 Kg

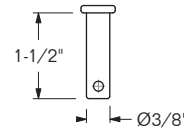
MODEL 1501-2635
MODEL 1501-2635-KIT



SLIDER PIN

MODEL 1501-2635

SUB FOR: PENZ 35-02 **FITS:** FRUEHAUF
MATERIAL: ALLOY STEEL **FINISH:** PRIMER
WEIGHT: 2.23 LBS / 1.01 Kg



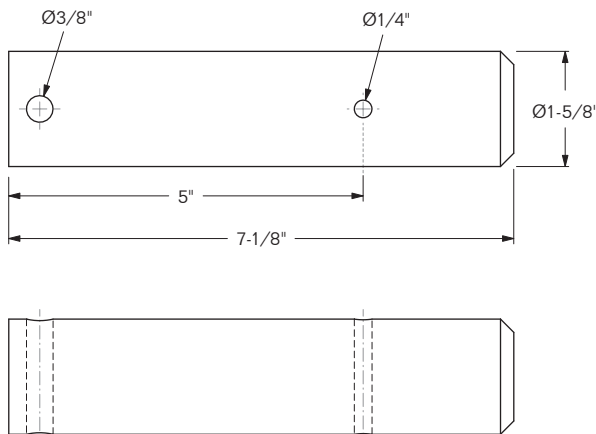
CLEVIS PIN

MODEL 1501-4611

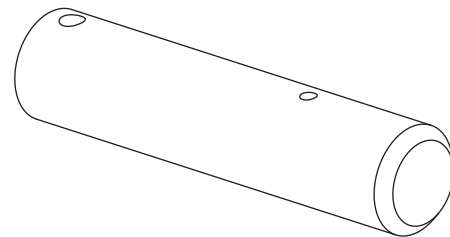
SUB FOR: PENZ 17-16
MATERIAL: STD CARBON STEEL
FINISH: ZINC-PLATED
WEIGHT: 0.054 LBS / 0.025 Kg

TO ORDER THE **COMPLETE ASSEMBLY**,
USE MODEL 1501-2635-KIT, WHICH INCLUDES
1501-2635 **SLIDER PIN**, 1501-4611 **CLEVIS PIN**,
1501-4613 **SPRING**, 1501-4591-SS **COTTER PIN**
& 1501-4599-SS **SPLIT ROLL PIN**.

SUB 1501-2635-KIT FOR: PENZ 35-02-KIT
KIT WEIGHT: 2.7 LBS / 1.22 Kg



MODEL 1501-2637



SUB FOR: PENZ 35-03
FITS: GREAT DANE, HUTCH
MATERIAL: ALLOY STEEL **FINISH:** PRIMER
WEIGHT: 4.1 LBS / 1.86 Kg

MODEL 1501-2638

SUB FOR: PENZ 35-04 **FITS:** GREAT DANE
MATERIAL: ALLOY STEEL **FINISH:** PRIMER
WEIGHT: 4.3 LBS / 1.95 Kg

MODEL 1501-2639

SUB FOR: PENZ 35-05 **FITS:** GREAT DANE
MATERIAL: ALLOY STEEL **FINISH:** PRIMER
WEIGHT: 4.48 LBS / 2.03 Kg

MODEL 1501-2681

FITS: CHASSIS KING
MATERIAL: ALLOY STEEL
FINISH: ANTI-GALL / LIGHTLY OILED
WEIGHT: 6.7 LBS / 3.36 Kg

MODEL 1501-6381
SLIDER PIN w/ V-Bracket

SUB FOR: GREAT DANE 13141-13119
PIN MATERIAL: HIGH-STRENGTH STEEL
V-BRACKET MATERIAL: FAB. CARBON STEEL
FINISH: ANTI-GALL / LIGHTLY OILED
WEIGHT: 3.15 LBS / 1.43 Kg

MODEL 1501-6970
SLIDER BOLT
w/ Washers
& Cotter Pin

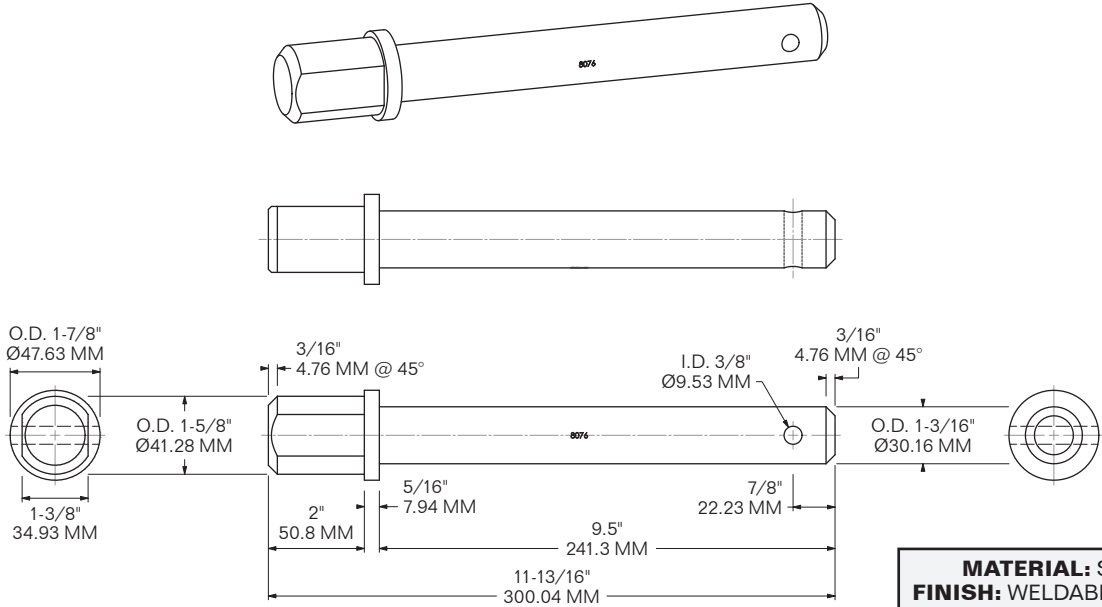
FITS: JINDO 48' & 53' SLIDER CHASSIS
MATERIAL: FAB. STEEL / NYLON
FINISH: BLACK PRIMER / SELF-COLOR NYLON
WEIGHT: 8.3 LBS / 3.76 Kg

MODEL 1501-7359
SLIDER PIN w/ Jaw

SUB FOR: PENZ 35-12
MATERIAL: FORGED STEEL
FINISH: BLACK PRIMER
WEIGHT: 8.85 LBS / 4 Kg

SPECIAL ORDER ONLY **MODEL 1501-8076**

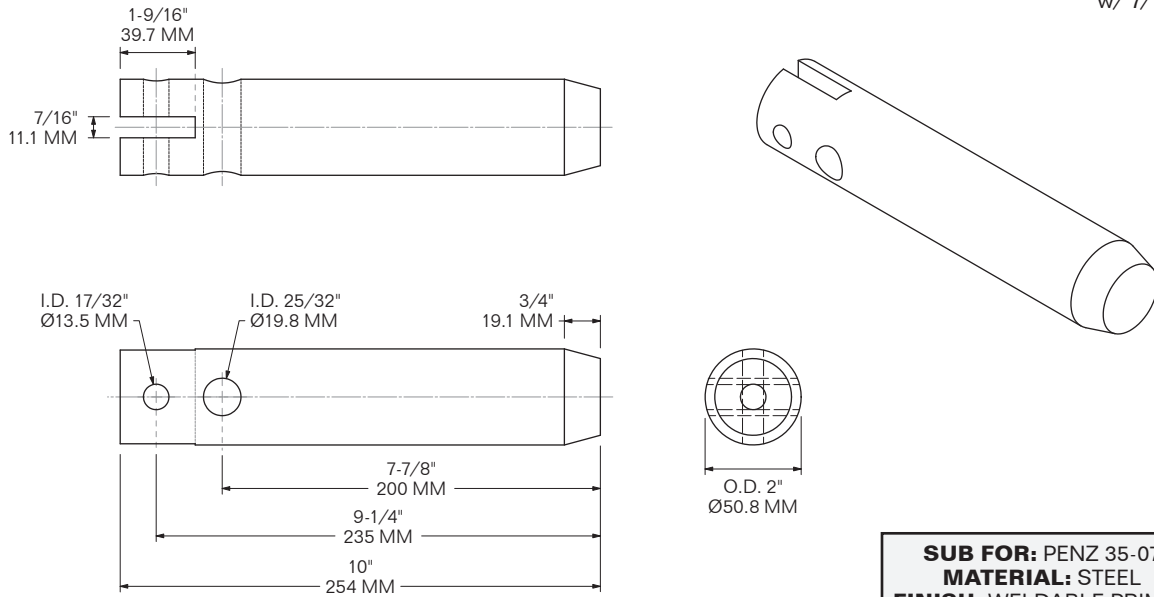
SLIDER PIN
Manac style



MATERIAL: STEEL
FINISH: WELDABLE PRIMER
WEIGHT: 4.24 LBS / 1.92 Kg

MODEL 1501-8654

SLIDER PIN
w/ 7/16" slot



SUB FOR: PENZ 35-07
MATERIAL: STEEL
FINISH: WELDABLE PRIMER
WEIGHT: 8 LBS / 3.63 Kg

MODEL 1501-6102
PIVOT ARM

SUB FOR: PENZ 35-08
MATERIAL: FAB. STEEL
FINISH: PRIMER
WEIGHT: 3.51 LBS / 1.59 Kg

MODEL 1501-6127-1
HANDLE

SUB FOR: PENZ 35-10
FITS: 1501-6127-2 HANDLE BRACKET
MATERIAL: FAB. STEEL
FINISH: PRIMER
WEIGHT: 6.25 LBS / 2.83 Kg

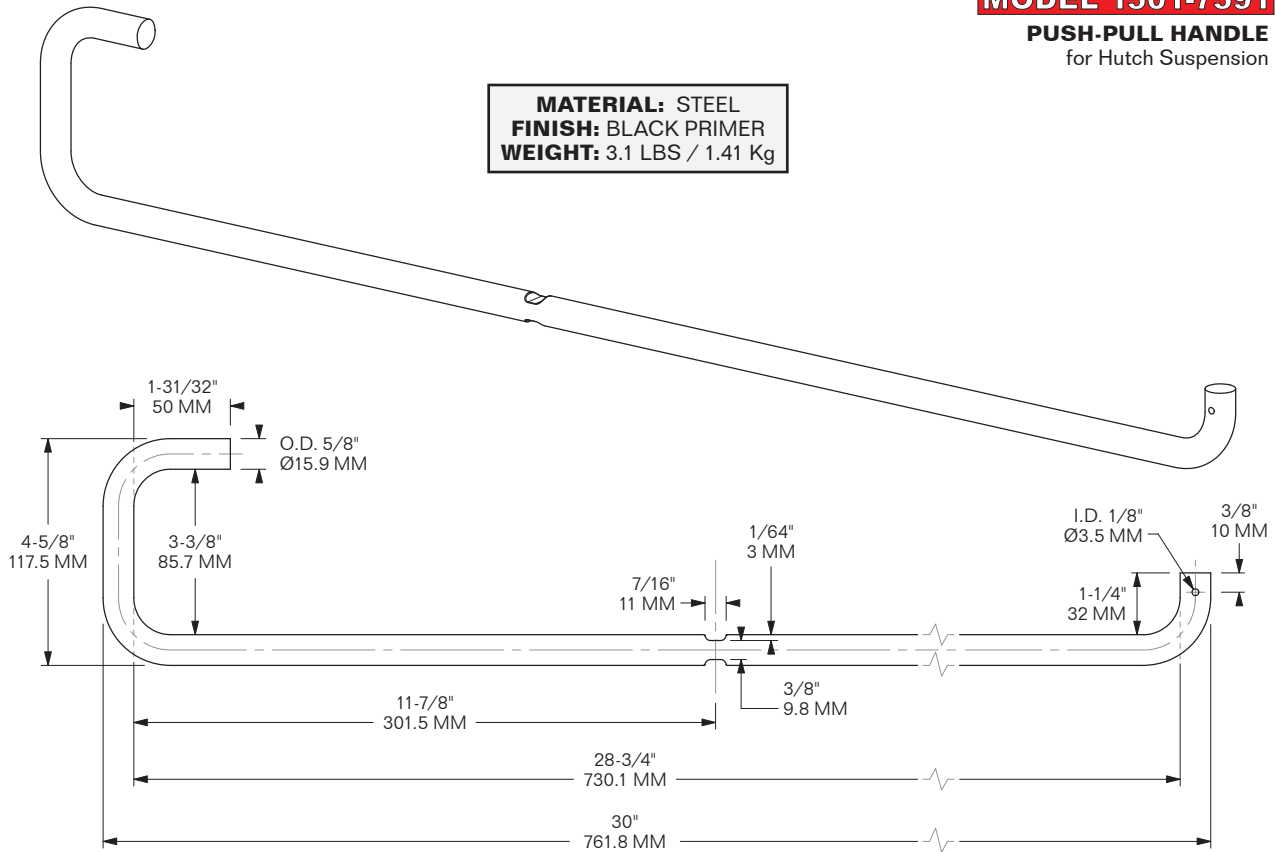
MODEL 1501-6127-2
HANDLE BRACKET

FITS: 1501-6127-1 HANDLE, PENZ 35-10
MATERIAL: FAB. STEEL
FINISH: PRIMER
WEIGHT: 1.1 LBS / 0.5 Kg

MODEL 1501-7591

PUSH-PULL HANDLE
 for Hutch Suspension

MATERIAL: STEEL
FINISH: BLACK PRIMER
WEIGHT: 3.1 LBS / 1.41 Kg



MODEL 1501-6468
ANGLED BRACKET

SUB FOR: PENZ 02-52
MATERIAL: 1/4" STEEL **FINISH:** PRIMER
WEIGHT: 1.5 LBS / 0.68 Kg

MODEL 1501-6469
Z-BRACKET

SUB FOR: MAERSK 107094, PENZ 02-53
MATERIAL: 3/8" STEEL **FINISH:** PRIMER
WEIGHT: 2 LBS / 0.9 Kg

MODEL 1501-6470
STOP PLATE

SUB FOR: MAERSK 105533 **FITS:** SEALAND
MATERIAL: FAB. STEEL **FINISH:** PRIMER
WEIGHT: 4.79 LBS / 2.17 Kg

MODEL 1501-6471
STOP BLOCK

SUB FOR: MAERSK 105591, PENZ 02-54
MATERIAL: FAB. STEEL **FINISH:** PRIMER
WEIGHT: 2.85 LBS / 1.29 Kg